

CLEAR LAKE PARK - PLAT 2

BEING A REPLAT OF A PORTION OF LOTS 3 AND 4, PLAT OF CLEAR LAKE PARK AS RECORDED IN PLAT BOOK 30, PAGES 149-150, IN THE PUBLIC RECORDS OF PALM BEACH COUNTY, FLORIDA, LYING IN SECTION 21, TOWNSHIP 43 SOUTH, RANGE 43 EAST, PALM BEACH COUNTY, STATE OF FLORIDA

NOVEMBER 2004

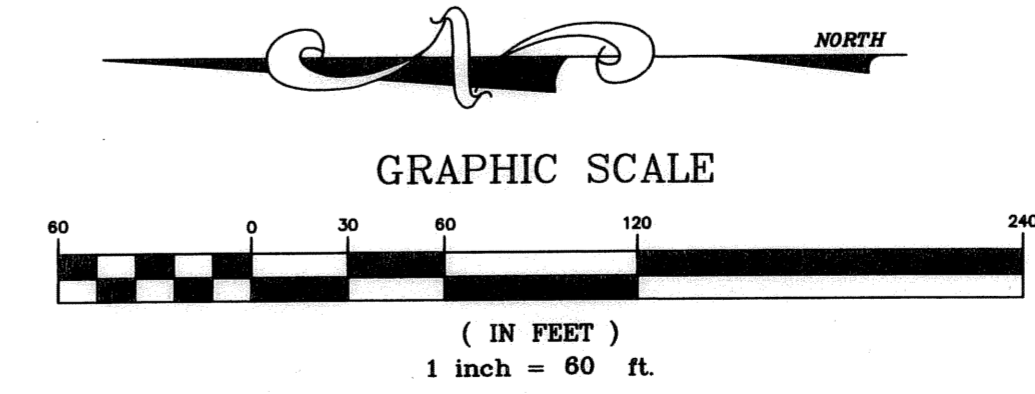
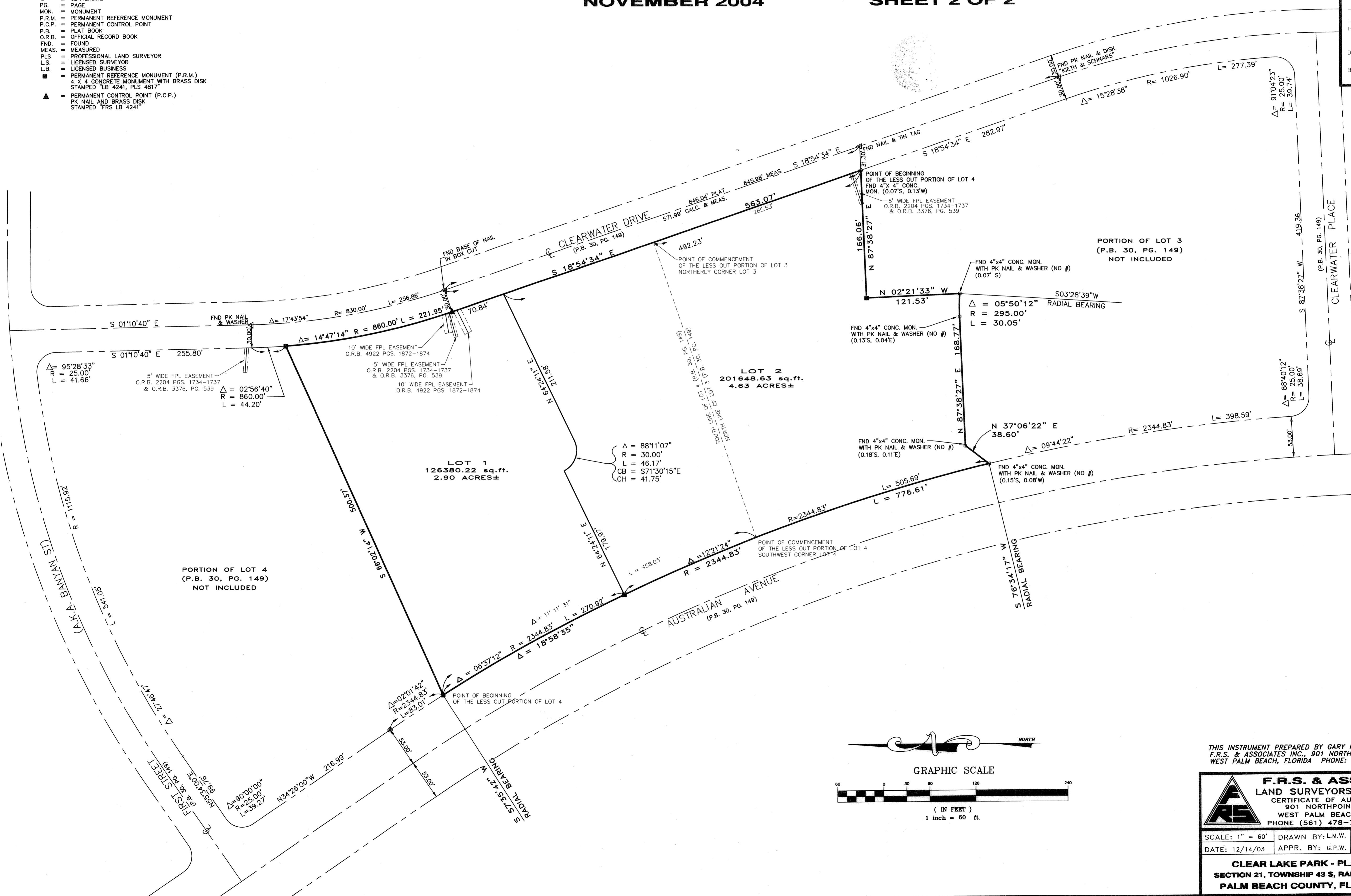
SHEET 2 OF 2

141

STATE OF FLORIDA SS
COUNTY OF PALM BEACH
This plat was filed for record at _____ this _____ day of _____, 20____ and duly recorded in Plat Book No _____ on page _____
DOROTHY H. WILKEN, Clerk Circuit Court
By: _____

LEGEND

- R = RADIUS
- L = LENGTH OF CURVE
- Δ = CENTRAL ANGLE
- CONC. = CONCRETE
- CL = CENTERLINE
- PG. = PAGE
- MON. = MONUMENT
- P.R.M. = PERMANENT REFERENCE MONUMENT
- P.C.P. = PERMANENT CONTROL POINT
- P.B. = PLAT BOOK
- O.R.B. = OFFICIAL RECORD BOOK
- FND. = FOUND
- MEAS. = MEASURED
- PLS. = PROFESSIONAL LAND SURVEYOR
- L.S. = LICENSED SURVEYOR
- L.B. = LICENSED BUSINESS
- = PERMANENT REFERENCE MONUMENT (P.R.M.)
4 X 4 CONCRETE MONUMENT WITH BRASS DISK
STAMPED "LB 4241, PLS 4817"
- ▲ = PERMANENT CONTROL POINT (P.C.P.)
PK NAIL AND BRASS DISK
STAMPED "FRS LB 4241"



THIS INSTRUMENT PREPARED BY GARY P. WILLIAMS IN THE OFFICES OF F.R.S. & ASSOCIATES INC., 901 NORTHPOINT PARKWAY, SUITE 301, WEST PALM BEACH, FLORIDA PHONE: (561) 478-7178

F.R.S. & ASSOCIATES, INC.
LAND SURVEYORS AND LAND PLANNERS
CERTIFICATE OF AUTHORIZATION NO. LB 4241
901 NORTHPOINT PARKWAY, SUITE 301
WEST PALM BEACH, FLORIDA 33407-1953
PHONE (561) 478-7178 FAX (561) 478-7922

SCALE: 1" = 60'	DRAWN BY: L.M.W.	F.B. C-3	CADD REF. G:\CLEAR LAKE PARK\PLAT 2\SHEET 2
DATE: 12/14/03	APPR. BY: G.P.W.	PG. 25	JOB NUMBER:
CLEAR LAKE PARK - PLAT 2 SECTION 21, TOWNSHIP 43 S, RANGE 43 E. PALM BEACH COUNTY, FLORIDA			D 98-025D SHEET 2 OF 2